



ZEBEDEE
INTERNATIONAL
PRESCHOOL
AND NURSERY

思百德國際幼稚及幼兒園

SCAN 
ME

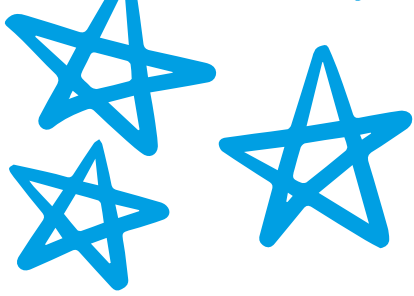
中文版

Class Information

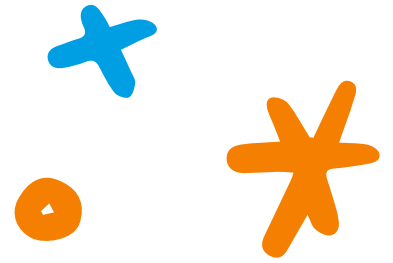
G/F Yat Wing House , Yat Nga Court, Tai Po ,
New Territories, Hong Kong 

Tel: 2650-3339 

<https://www.zebedee.edu.hk/> 



About us



"The school opened in 2008 and offers programmes of learning for children from **12 months to 6 years**. **Playgroup** is the **starting point** where accompanied toddlers try new things and enjoy a sensory environment as well as meeting some new little friends.

Moving on from playgroup, children can join the **nursery class** from **aged 2 years** for either a whole day or half day independently, without Mum or Dad. It is here they will **develop language**, and their **personal and social skills**.

Preschool children start **K1** at around 3 years old. The curriculum grows with them as they embark on **inquiry-based learning** that gets them thinking and wondering **about their world**. This leads on to K2 where they prepare for entry into international primary schools.

At the end of **K2** the children's language development is now **well on track** and makes for a smooth **transition** into the **K3 class**. In this year, the children hone their **English language skills** with **reading** and **writing**, team games, and **collaborative learning**. Language is key to learning and Zebedee has a **proven track record** as a successful immersion style English language provider.

The **preschool curriculum** includes **Phonics**, **Mathematics**, **Music**, **Physical Education** and **Mandarin**, **Understanding the World**

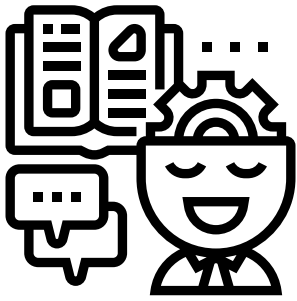
The school also offers a wide choice of **extra-curricular classes** from Monday to Saturday mostly conducted in English.



Mission Statement

Our mission is to provide a safe and **nurturing environment** that **inspires children** to be **independent** learners with **inquisitive minds**. To gain knowledge and **develop skills** at their **own pace** with the **confidence and resilience** they need to make a positive contribution to our world.



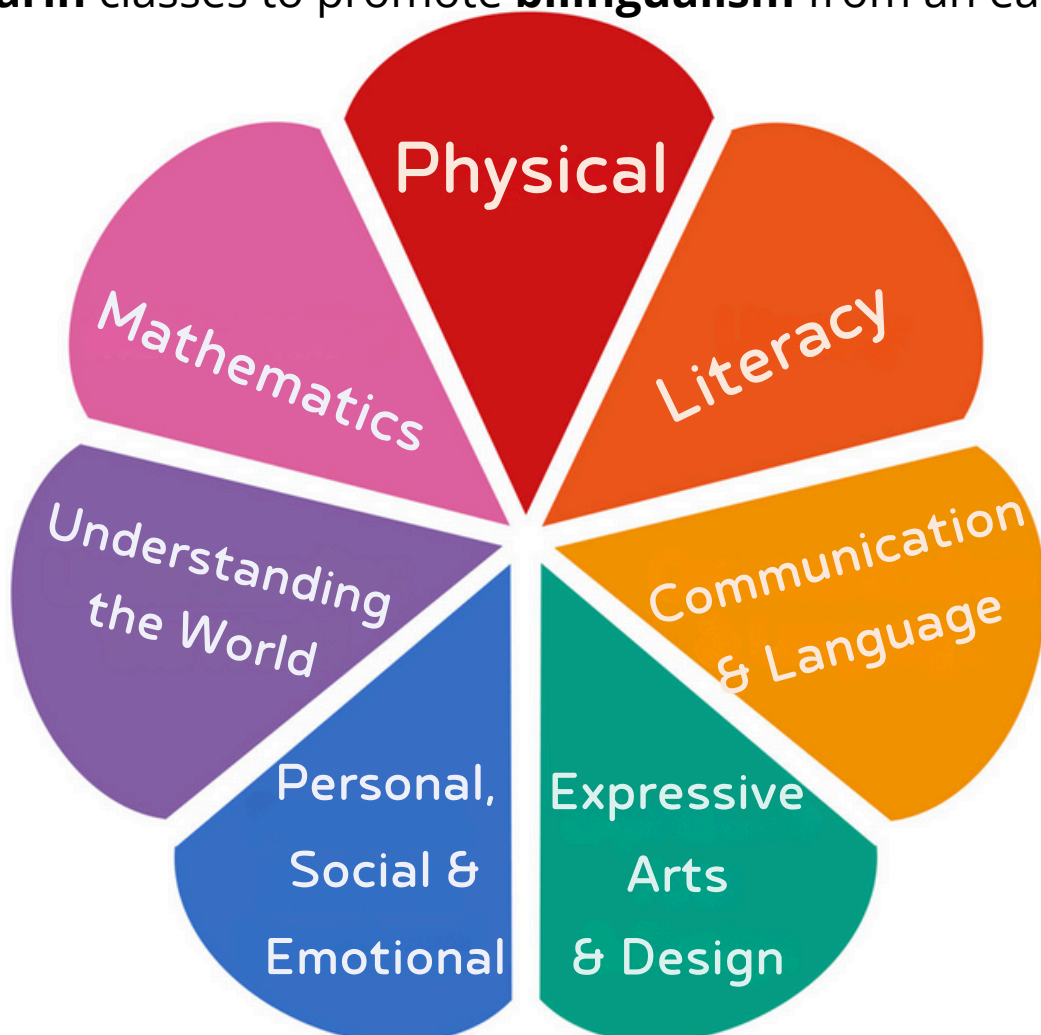


Our School Curriculum

The core **curriculum** framework for both nursery and preschool classes is the **Early Years Foundation Stage (EYFS)** from Britain. The seven areas of the framework are a guide to child development from birth to five that culminates in the attainment of the **early learning goals (ELG)** by the time a child reaches five years old.

The teaching **approach** in the **nursery** class is **thematic** around areas of particular interest to the younger children.

The teaching **approach** in **preschool** is **structured inquiry** and teachers plan around the **children's interests** and the direction of the **provocations** that happen at **circle time**. In addition, there are daily **Mandarin** classes to promote **bilingualism** from an early age.

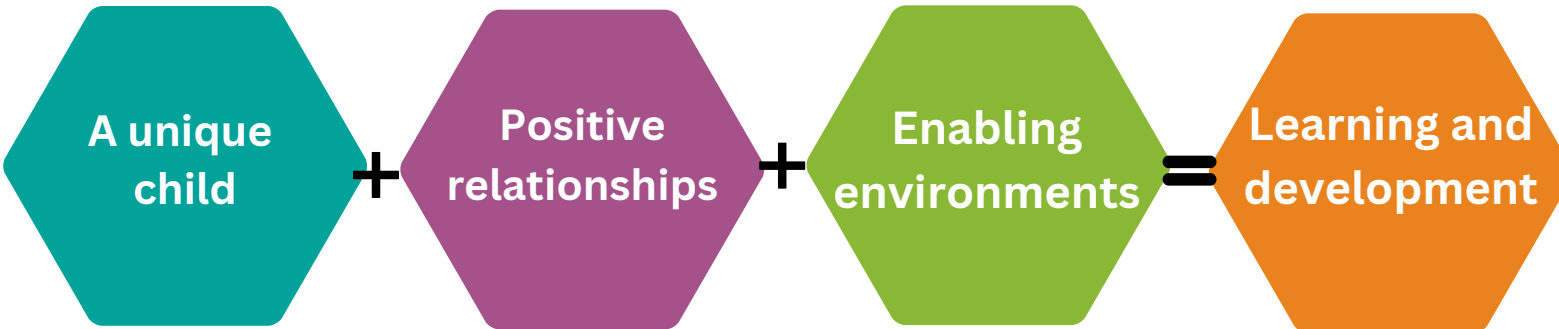




Inquiry-based Learning



The approach to learning is inquiry-based, underpinned by the principles of the Early Years Foundation Stage Statutory Framework



Every child is a **unique child** who is constantly learning and who can be resilient, capable, confident and self assured

Children learn to be strong and independent through **positive relationships**

Children learn and develop well in **enabling environments** with teaching and support from adults, who respond to their individual interests and needs and help them to build their learning over time

(Recognise the) importance of **learning and development**. Children develop and learn at different rates

Teachers

- Observe and understand each child's progress
- Support children to develop a positive sense of identity
- Keep them safe
- Value and respect all children and families equally

Including

- Warm and loving, and foster a sense of belonging
- Responsive to a child's individual needs, feelings and interests.
- Supporting child's own efforts
- Consistent rules

Example

- Value all people, learning and development
- Offer stimulating resources, indoor & outdoor spaces
- Rich learning opportunities through play
- support children to take risks & explore

How we do this

- Teaching children through playful & challenging opportunities across the prime and specific areas of development and learning.
- They Foster the characteristics of effective learning

The characteristics of effective learning

Playing and exploring

Finding out, exploring, playing with the familiar, and being willing to have a go.

Active learning

Being involved and concentrating, keep trying, enjoying achieving what they set out to do.

Creating and thinking critically

Having their own ideas, making links between knowledge, and working with ideas.



Our approach

A wholesome approach that begins with the child's existing knowledge. Then builds and develops the thoughts, ideas, and skills of each child.

PLANNING

What next?

Experiences and opportunities, learning environment, resources, routines, teachers' role

START HERE

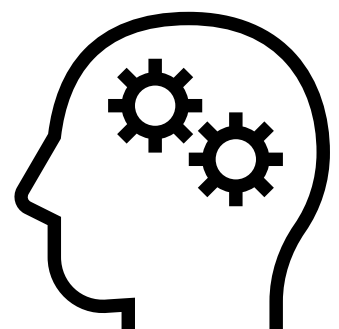
The Child

OBSERVATION

LOOK LISTEN AND NOTE
DESCRIBING

ASSESSMENT

Analysing observations and **DECIDING** what they tell us about the children





What happens in our Nursery Classes

Nursery class is the first step of independent learning for children aged 2 years. There are options to either join a half day **AM/PM** or **whole day class**. Playgroup attendees will have priority for nursery places.

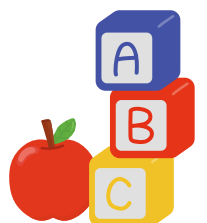
The classes are taught in English by qualified and registered Child Care Workers with **daily Mandarin** stories and songs.

The British curriculum EYFS framework supports the three main focus learning areas; **Personal Social development, Physical development,** and **Communication and Language**. These areas are explored through guided themes and activities.

The **children's development** is tracked and assessed at regular intervals and recorded in a personal **portfolio** of their work and achievements.

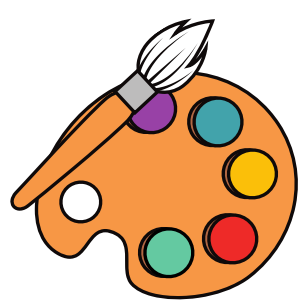
Seesaw is an important **communication platform** to enhance home-school cooperation. It gives parents all year round access and contact with the teacher about school related matters.

The **whole day** nursery permits children to **stay at school** from 8.45am to 4.30pm each day. These children will benefit from the full curriculum throughout the day and will **take a nap** after **eating lunch** which is usually provided from home.



Inside our Nursery classes





What happens in K1



In K1 the British **(EYFS) framework** is used to guide the **7 developmental areas** - **Personal Social, Physical, Language and Communication, Mathematical, Expressive arts, Understanding of the world, Literacy**

We have adopted a **structured inquiry** approach that engages students to make **real-world connections** through explorations around the units of work covered over the year.

In circle time **discussions and questioning** are very evident as well as the **interactions** during their day. Students **thrive** in this **active learning** approach and are encouraged to relay their thoughts openly in an environment that allows them to **explore**.

In **addition** to the **key areas** of the EYFS, we incorporate **phonics**, and recognition of the **alphabet**. Establish a good **pencil grip** through tracing, which prepares them for the K2 class. There are also **daily Mandarin** classes.

We encourage family **involvement** in class learning through our open-door policy, inviting parents to join in-class activities and unit-based trips to help **build a community** of learners. By the end of the year, students are ready to progress to our **K2 class**, where they can build on what they have learned as they continue their **learning journey**.



Pictures of K1



Two orange pencils with green erasers and a blue spiral notebook are positioned at the top of the page. The pencils are on the left, and the notebook is on the right.

What happens in K2

A '**child centered**' approach in an inquiry based setting gives our K2s the **opportunity to explore**, investigate and **find answers** to relevant questions through **creative** and **critical thinking**. Children in the K2 class practice new **skills** while acquiring knowledge through **Inquiry-based** learning covering four units per year. This brings out the best in the children by **investigating** and **collaborating** using the English language throughout the sessions, except for their daily **Mandarin classes**.

We use the **Early Years Foundation Stage (U.K.)** as we build on the **seven developmental areas** that provide the **solid** foundation required to prepare children for **future** learning. K2s work intensely on our **phonics** programme, '**Get Reading Right**' / '**Phonics Hero**' which prepares them for the next step of **reading readiness** using phonics. This is also supported with **access** to story books for **early reading** and mini phonic books.

Talking about **skills**, we focus on developing **motor skills**, especially fine motor where **tracing**, forming letters correctly, writing and having good **pencil control**, **scissor** practice, etc., these prepare children for **independent** learning in addition to having a **positive attitude** which enables them to **master** skills and be confident in reaching the **Early Learning Goals**. We include our K2 **families** through Parent-Child activities, field trips, or outings which are both educational as well as **building a community**.



Pictures of K2



What happens in K3

In K3 we are preparing the students for
Primary School.

Students in K3 will begin the year following the **EYFS framework** and then concentrate on **Key Stage 1 (KS1)** towards the end of the year where they will focus on multiple subjects.

For example, during **Mathematics** we will work on **measurements, place value, addition** and **subtraction**, and shapes as well as **introduce** multiplication, division, and fractions towards the end of the year.

English is a huge part of our **day-to-day** ongoings. Every day students will **practice** asking and answering questions with each other and the teacher to build our **conversation skills**. We work on **Phonics** three days a week in the classroom, and then **reading books** are sent home daily. We **practice** our **spelling** weekly and work on our **writing** most days. Students become more **confident** in **speaking** English as the year progresses and can hold **conversations** with each other.

K3 students become more **independent** throughout the year, they complete work **individually** as well as many opportunities to work well **in groups** and help each other. We aim to learn in a fun environment and prepare students for **primary school**.



Pictures of K3

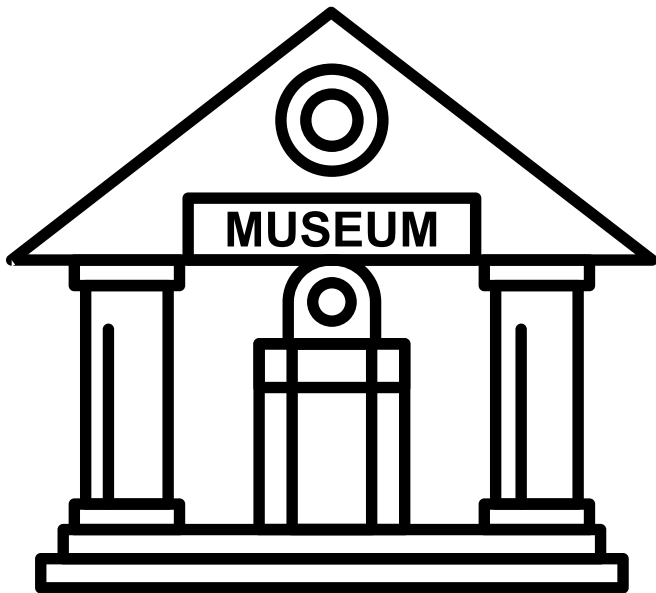


Field Trips

At Zebedee, we believe it is important to explore the local community.

We are always looking for new places to visit. We look at ways for parents to join in learning experiences during school hours and field trips offer the opportunity to gain valuable knowledge about the world around us.

- **Dim Sum Restaurant**
- **Welcome BBQ**
- **Kadoorie Farm**
- **Tai Po Railway Museum**
- **Walk to the Post office**
- **Strawberry picking**
- **Flower Market**
- **Tai Po Library**
- **Beach**
- **Seasonal Walks**
- **Visit the local parks**
- **Heritage Museum**
- **Science Museum**
- **Brighter Smiles Playland**
- **Tai Po Waterfront park**
- **Kam Tin Farm**
- **Sports Day**







What happens in Baby Music & Movement

We welcome babies between the ages of 12 to 18 months to attend our **Baby Playgroup**. We offer a nurturing learning environment where the children can **play and learn** at their own pace. Our sensory play-based curriculum and various activities will aid them in acquiring new **social skills** and are **great for parents** and carers to share experiences.

During our playgroup, the children **explore and participate** in activities that help advance their **cognitive, physical, emotional, and social development**. During the music sessions, we introduced simple musical instruments to **explore** various types of sounds and notes.

Baby Playgroup is a **stepping stone** in **early brain development**, **join now** and **spread the word** watch your child **flourish and grow!**





Inside Baby Music & Movement





What happens in Playgroup

Playgroup is for **accompanied toddlers** aged 19 months plus. It allows parents to ease their children into our learning environment, especially if they are planning to **attend nursery** here.

Children can **enjoy** a host of themes that have been planned throughout the year. Usually, parents attend **2 or 3 sessions per week**. If parents are working, grandparents are also welcome to accompany the children as are domestic helpers.

A typical day in the playgroup will provide **gross and fine motor** free **play time** in the large playroom with cars, a playhouse, and a slide and in the classroom with puzzles, sensory toys, and other **stimulating resources**. Following that, there will be a **structured activity** planned by the **playgroup leader**.

Snack time comes next to boost depleted energy levels and is important for social interactions for both adults and children. Just before saying goodbye there is **music and movement** time.

Playgroup is a **fantastic** introduction to your child's **learning journey**.



Inside Playgroup





Camps

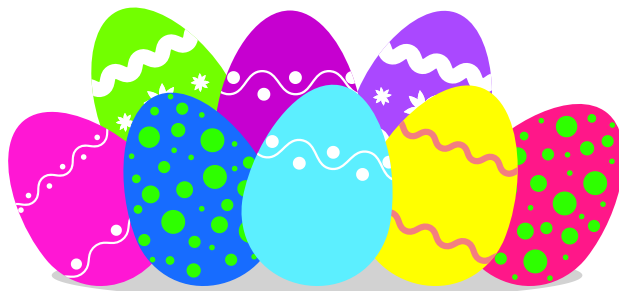
Zebedee camps held in all major holidays.



Christmas Camp

Join us for a week of fun and glitter during the Christmas holiday. Arts and Crafts together with your favourite stories. + a special surprise

Apply now! [http:// www.zebedee.edu.hk/christmascamp.pdf](http://www.zebedee.edu.hk/christmascamp.pdf)



Easter Camp

Do you love Easter egg hunts? Then you should come along. Lots to enjoy, such as music & movement, stories, arts & crafts + a chocolate treat.

Apply now! [http:// www.zebedee.edu.hk/eastercamp.pdf](http://www.zebedee.edu.hk/eastercamp.pdf)



Summer Camp

Summer Brain is in its 20th year! Its going to be the coolest place to be. Don't miss this STEM extravaganza. Truly high value summer learning

Apply now! [http:// www.zebedee.edu.hk/english-activities/](http://www.zebedee.edu.hk/english-activities/)

English Smarties

One of the additional classes for Zebedee students although external applications are welcome to apply. *We are always thinking of new ideas.*

English Smarties runs **Monday** to **Saturday**.

Smarties are **small-sized** classes that give students the **opportunity** to be a little more independent as they meet children from different settings.

Children can **improve** their **English** easily if they attend 2-3 days per week for the whole year. Their **confidence** will grow through natural interactive **communication** with their peers and the teacher.

Students will play **games**, make crafts and **explore** the school's environment. Enjoy story time with other **engaging activities**.



Where to find us...

